

IN STYLER[®]
Rotating Iron

Ionic Ceramic



USER MANUAL

InStyler[®] Ionic Ceramic Rotating Iron

IMPORTANT SAFETY INFORMATION

WARNINGS: TO REDUCE THE RISK OF SERIOUS INJURY, READ ALL INSTRUCTIONS AND WARNINGS COMPLETELY BEFORE USING THIS PRODUCT

InStyler Rotating Iron has been carefully engineered for both effectiveness and safety, however, basic safety precautions should always be followed when using any product, especially when children are present.

- **INSTYLER ROTATING IRON IS NOT INTENDED FOR USE BY CHILDREN.**
- **KEEP AWAY FROM WATER.**
- **DANGER** - As with most electrical appliances, electric parts are electrically live even when the switch is off. To reduce the risk of electric shock:
 1. **ALWAYS UNPLUG IT IMMEDIATELY AFTER USING.**
 2. **DO NOT** use while bathing or showering.
 3. **DO NOT** place or store InStyler Rotating Iron where it can fall or be pulled into a tub, toilet or sink or any other water source.
 4. **DO NOT** use InStyler Rotating Iron near water.
 5. **DO NOT** place in or drop into water or other liquid.
 6. If InStyler Rotating Iron falls into water, **DO NOT REACH INTO THE WATER!** Unplug it immediately.

WARNING: TO REDUCE THE RISK OF BURNS, FIRES, ELECTRICAL SHOCK, DEATH, INJURY OR DAMAGE TO PROPERTY:

1. Counterfeit versions of the InStyler Rotating Iron do exist. To ensure you have purchased a genuine product, and to reduce the risk of burns, electrical shock and malfunctions, purchase from authorized dealers only.
2. Use InStyler Rotating Iron only for its intended use as described in this manual. **DO NOT** use attachments not recommended by the manufacturer
3. **NEVER** operate the InStyler Rotating Iron if it has a damaged cord or plug, if it is not working properly, if it has been dropped or damaged or if it has been dropped into water. If the power supply cord or plug is damaged, the InStyler Rotating Iron must be replaced by the manufacturer or an authorized service agent in order to avoid a hazard.
4. Keep this product and the cord away from water and heated surfaces. **DO NOT** wrap the cord around the InStyler Rotating Iron until unit is completely cool.
5. This product has moving parts. Children and pets should be kept away when product is in use.
6. The InStyler Rotating Iron should **NEVER** be left unattended when plugged in.
7. **NEVER** use while sleeping.
8. **NEVER** drop or insert any object into any opening or hole on The InStyler Rotating Iron.

9. **DO NOT** operate outdoors or where aerosol (spray) products are being used or where oxygen is being administered.
 10. **DO NOT** use an extension cord with the InStyler Rotating Iron.
 11. The InStyler barrel and unit bottom may be hot during use. **DO NOT** allow eyes or skin to touch the heated surfaces.
 12. **DO NOT** place InStyler on any unprotected surface while it is operating or cooling down after use, except for the InStyler carrier/mat, which has been provided.
 13. **DO NOT** operate with a voltage converter.
 14. This product is designed for hair styling. **DO NOT** use for any other purpose.
 15. This product is a personal care device and is **NOT** intended for commercial use.
 16. **DO NOT** use this product if any parts become damaged. Inspect the InStyler product prior to beginning hair styling to ensure all parts are secure in their place.
 17. **DO NOT** subject this product to excessive force or shock that may result in malfunction, shorter life span or distorted parts.
 18. **DO NOT** tamper with this product's components. Doing so may cause unnecessary damage. This product contains no user-serviceable parts.
 19. **DO NOT** use liquid cleaners, aerosol cleaners, or any cleaner containing alcohol, detergent, abrasive or corrosive materials.
 20. The InStyler Rotating Iron should be used only on clean dry hair.
 21. **DO NOT** use the InStyler Rotating Iron if you are 12 years or younger.
 22. This appliance is not intended for use by persons (including children) with reduced physical, sensory, or mental capabilities or lack of experience or knowledge. They should be given supervision or instruction in the use of this appliance by a person responsible for their safety.
- **IMPORTANT:** The InStyler Rotating Iron should **NEVER** be used with any type of synthetic hair extension. The InStyler can be used on real human hair extensions **ONLY**, with the following precautions. If your real human hair extensions are sewn in, you can use your InStyler up to the scalp. If your real human hair extensions are glued in, make sure you start with your InStyler below the glue.
 - **SAVE THESE INSTRUCTIONS**
 - **KEEP THIS MANUAL IN A SAFE PLACE FOR FUTURE REFERENCE AND MAKE SURE ANYONE WHO USES THIS PRODUCT ALSO READS THIS MANUAL.**
 - **READ ALL INSTRUCTIONS BEFORE USING YOUR INSTYLER ROTATING IRON. NO ASSEMBLY REQUIRED.**

Introduction and Getting Started

CONGRATULATIONS! You have just purchased the most versatile hairstyling tool available today. From sleek, smooth styles to glamorous, curly looks, and everything in between, the InStyler is the only tool you'll need for dynamic, fabulous styles every day!

“Go Slowly!”

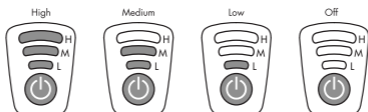
- Become familiar with how the InStyler works with your hair. Your instinct will be to glide the InStyler through the hair quickly, **but you will achieve much better results by going slowly.** Even though you're moving the unit slower, you will still get results faster than using a curling iron or a flat iron. The unique rotating barrel does most of the work for you.
- **Experiment with it and be creative.** You will quickly see what this innovative tool can do. The styling tips on the following pages will help give you some ideas of what is possible. You will become more efficient at styling your hair each time you use your InStyler.

IMPORTANT!

**For best results, go to
www.instyler.co.uk
click on
Video Tips & Techniques**

Multiple Heat Settings:

HIGH	3 Bars, 195 °C	Ideal for thick, coarse hair.
MED	2 Bars, 157 °C	Ideal for thin-to-medium textured hair.
LOW	1 Bar, 140 °C	Ideal for thin, fine hair.
OFF	No Bar(s)	



- The unit will start on “High.”
- Press the Power button again to reduce heat.
- The LED bars will flash while reaching heat; once the temperature is reached, the LED bars will stay lit.

Features InStyler Ionic Ceramic Rotating Iron

30 Second Rapid Heat-up

Black Tourmaline Ceramic Heated Rotating Barrel
Straightens, Curls and Polishes Hair

32mm Barrel
Offers Volume, Curls and Flips

195°C Ceramic Heat
Salon Quality Results

Curved Black Tourmaline Ceramic Smoothing Plate
Automatically Aligns to Smooth Hair and Reduce Frizz, Without Crushing or Creasing.

First Row of Ionic Bristles
Separates and Aligns Hair

Second Row of Ionic Bristles
Adds Volume and Reduces Frizz

Swivel Cord

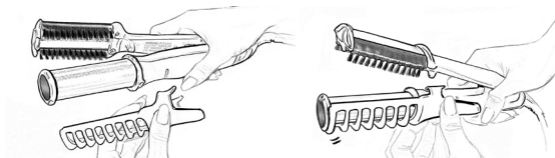
Automatic Safety Shut-Off | Voltage: 220-240V | 50/60Hz | Power: 58W

Safety First - Using your Thermal Guard

NOTE: It is recommended that you use your InStyler with the included Thermal Guard Training Aid, to help prevent burns while you are getting used to this unique new hot styling tool.

Attaching Your Thermal Guard Training Aid

1. Before attaching the Thermal Guard make sure the barrel of the unit is cool to touch.
2. To attach, snap the Thermal Guard Training Aid onto the side of the unit directly under the ring below the barrel.



3. Rotate the Thermal Guard Training Aid until tabs are seated in the indentations on the body of the InStyler, and the Thermal Guard Training Aid is facing out.
4. Once it is snapped in place, you can use your InStyler as you normally would.

Removing Your Thermal Guard Training Aid

5. Before removing Thermal Guard make sure the barrel of the unit is cool to touch.
6. To remove the Thermal Guard Training Aid, firmly grab the Thermal Guard Training Aid, making sure the barrel of the unit is cool, **twist** to unseat it and pull to remove.

NOTE: *It is important to keep your InStyler clean, as hair product build-up can accumulate on the barrel and bristles. With the unit unplugged, wipe the outside surface only with a lightly damp cloth. Bristles can be lightly scrubbed if necessary. Make sure the InStyler is completely dry before plugging into any power source. Please see page 15 of this manual for more detailed instructions on cleaning.*

*Always allow the InStyler to cool before storing.

The Basics - Preparation for all hair types.

- Before using your InStyler, you should always start with **clean, dry hair**.
- You should also **detangle** first with a brush, and all sections should be combed out for optimal results and shine.
- Sections of hair to be styled should be no wider than the length of the InStyler barrel. We recommend starting with **1 to 3 inch sections at a time** for whichever style you want to achieve.
- **Style the under layers of your hair first.** After under layers are completed, style your top layers.
- You may use any **salon quality** styling product with your InStyler, however we do not recommend the use of any oil-based products with your InStyler
- For better hold, you can use your favorite light styling spray on each section of hair before using your InStyler.
- **Go Slowly!** The most important lesson is to glide the InStyler **slowly**. Don't worry if you see "steam" coming off of your hair when using your InStyler. This is not the result of any damage to the hair, it is simply excess moisture that is evaporating.

Hair Types

The way you use your InStyler depends on what type of hair you have. You'll get the most out of your InStyler if you use the techniques best suited to your hair type.

The three main types of hair are:

1. **Fine** - Set the InStyler at Low to Medium heat setting. With fine hair, you should only need 1 to 2 passes with the InStyler to achieve your desired results. For finer hair use less tension and glide the InStyler through your hair more quickly for best results.
2. **Medium or Normal** - Set your InStyler to the Medium to High heat setting. You should only need 1 to 2 passes with the InStyler to achieve your desired results.
3. **Thick or Coarse** - Set your InStyler at the highest heat setting and style as desired. With coarse hair, 2 to 3 passes with the InStyler should be enough to set your style.

Don't rush! Take your time and move slowly through the hair.

NOTE: For colour treated hair, we also recommend a lightweight shampoo and a light leave-in conditioner.

- *Volumizing products can be used to hold the style.*
- *To hold your style, end with a professional light finishing spray.*
- *Although the InStyler uses less heat than other hair appliances, we recommend using thermal protectant products before use.*

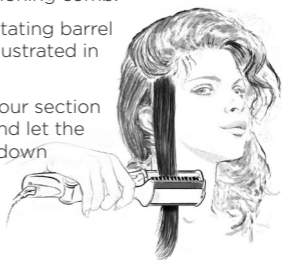
Sectioning Hair

To achieve the style you want with your InStyler, it is important to know how to properly **section the hair**.

- With longer hair, clip up the top layers of your hair, and then begin sectioning and styling your under layers of hair first.
- For best results, do not use fingers to gather each section of hair. You can gather a much “cleaner” section with a sectioning comb.
- Start with 1 to 3 inch sections working around each side of the head to the nape of the neck. Use **small** sections of hair.
- When styling hair, grip the InStyler firmly but not too tightly. Let hair glide through it. **Let the InStyler do the work.**

Straightening

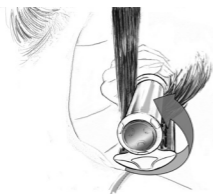
1. Section your hair using a sectioning comb.
2. Position the InStyler so the rotating barrel side is next to your scalp as illustrated in the picture.
3. Gently close the InStyler on your section of hair starting at the roots, and let the InStyler **slowly** glide straight down through the ends of your hair.



◀ **TIP:** To straighten at the root, simply glide just the hot barrel over the root area (see illustration). Do not close the unit. Be cautious to avoid burning your scalp.

Flick Out

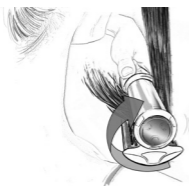
1. Gently close the InStyler onto the section of hair with the barrel positioned over the section of hair.
2. Slowly glide the InStyler down through the hair section from the roots to the ends. (see illustration)



3. Near the end of the hair section, rotate your wrist so the InStyler brush turns out away from your face. Allow the barrel to rotate 3 to 5 seconds in place on your ends before releasing the hair. (see illustration)

Curl Under

1. Gently close the InStyler onto the section of hair with the barrel positioned under the hair section.
2. Slowly glide the InStyler down through the hair section from the roots to the ends. (see illustration)



3. Near the end of the hair section, rotate your wrist so the InStyler brush turns in towards your face. Allow the barrel to rotate 3 to 5 seconds in place on your ends before releasing the hair. (see illustration)

Soft Curl

1. For the curling technique, you may find it easier to remove the Thermal Guard Training Aid while keeping in mind to be **cautious** and avoid burning your face or scalp. (See page 6 for Thermal Guard Training Aid removal instructions.)
2. Being careful to not burn your fingers, wrap a section of hair around the barrel of your InStyler from root to ends, with the barrel side facing your scalp (see illustration).
3. Gently close the InStyler onto the section of hair. Rotate your wrist slightly to ensure the ends of your hair are included.



4. Let the InStyler rotate for 5 to 10 seconds on each section of hair, then gently open the unit **letting the hair fall from the barrel**.
5. For tighter, more defined curls, you can let your InStyler rotate for a few seconds longer. Let hair cool completely before running fingers through to separate.

Volume Boost

To give your hair a boost of even more dramatic volume, you can try a technique called, “On Base Styling”

1. To begin, wrap a section of hair around the barrel down to the root.
2. Place the InStyler barrel directly over the root, close the unit and let the barrel rotate for a few seconds. (see illustration)
3. Open the InStyler and let the hair fall from the barrel. (see illustration)

DO NOT loosen newly styled sections with fingers or comb until the hair is completely cool to the touch. This technique can be used anywhere you want an extra volume boost.



InStyler Techniques - Advanced

To create extra body and volume using the InStyler:

- With the InStyler barrel facing towards the back of the head, close the InStyler onto the section of hair, and slowly pull the InStyler in the opposite direction that you want your hair to lay. In other words, at the crown of your head, grab a section of hair with the InStyler and slowly pull the unit forward towards your forehead.
- To **boost the volume on the sides and back of the head**, gather a section of hair and push the InStyler upwards towards the crown of your head. Gently pull the InStyler through the ends of the section of hair. This technique gives extra body in the root area making hair look fuller. This technique can be used anywhere you need extra body, volume or height.
- For **additional height in your bangs**, wrap the bangs with the barrel towards your scalp and let the InStyler rotate for a few seconds directly over the root. Open the unit and let your bangs gently fall from the barrel.



Frequently Asked Questions

How do I use the InStyler as compared to my flat iron?

- A. The technique is similar in that you put your hair into the InStyler, you close it onto your hair, and then slowly move down the length of your hair. That is where the similarities end!! The rotating, heated, polishing barrel and bristles will do most of the work for you. Plus, you'll find that you can do much, much more with your InStyler than you could ever do with your flat iron.

My hair is coming out frizzy when I use my InStyler. What am I doing wrong?

- A. **Go Slowly.** It helps to completely dry, comb and detangle your hair as much as possible. Position the InStyler so that the barrel rotates with the direction of your hair. Also, keep in mind to put as little tension as possible on the barrel. This will help keep frizz to a minimum.

Does the InStyler work on natural African American hair?

- A. Absolutely. You will get best results if your hair is combed and detangled first. The InStyler is a great tool for African American Hair because it will not leave crease marks like flat irons, and the polishing barrel and bristles will leave the hair looking shiny and beautiful. The InStyler is safe for any type of hair when used properly.

Can I use styling products before or after I use my InStyler?

- A. You can use any salon quality product with your InStyler, although we do not recommend using any oil-based products on your hair beforehand. A professional thermal protectant spray can be applied to the hair before you style, as well as any professional firm-up or styling spray to help hold the style.

The InStyler doesn't seem to be working on my ends. Am I doing something wrong?

- A. If you're having trouble styling the ends, try holding

the InStyler there a little bit longer. The ends of the hair are normally the driest part of the hair, and can be a bit more difficult to style. It helps to use a good conditioner, especially on the ends to help infuse moisture. Also, if you have split ends, the hair may come out looking frizzy.

I see smoke coming from my hair! Is it burning my hair?

- A. No! The InStyler is not burning your hair. This is just a byproduct of the evaporation of built-up conditioner or styling products on your hair and it is completely normal.

Can I use my InStyler with real human hair extensions?

- A. Yes. Make sure you start with your InStyler below where the extension is attached to your natural hair. Do not pull the InStyler through with any pressure, as you may pull out your extensions if not careful. **NEVER** use your InStyler with any synthetic hair extensions.

Product and Troubleshooting Questions

What is the InStyler?

- A. The InStyler is a new hair styling tool that straightens, polishes and styles hair by means of a rotating heated barrel and brush bristles. This totally new design polishes the hair strands individually, creating amazing results that are much better than those they would have achieved using a flat iron, curling iron, or hot tool. The new design delivers great results without an extreme amount of heat or heavy styling products.

How is the InStyler different than my flat iron?

- A. Simple: A flat iron compresses, mashes and then literally bakes your hair between two extremely hot plates. The InStyler's rotating polishing barrel gives your hair the heat it needs to help style and straight-

en. Since the barrel is constantly moving, it won't "press and bake" like a traditional flat iron. The InStyler also features a heated, floating plate between the two rows of brushes. The plate automatically adjusts, allowing the hair to have more consistent contact with the barrel, without having to grip the unit so tightly. The result is less frizz and smoother, shinier hair with no creasing. The polishing barrel allows the InStyler to actually use less heat than a flat iron delivering better results including perfect flips, curls and loads of luscious volume.

I need a lot of heat to straighten my hair. Will the InStyler get hot enough?

- A. We get asked this question a lot, and we're very proud to say you can add this one to the old "hair styling myths" column! With the InStyler, you don't need a lot of heat to straighten and style your hair! The InStyler's unique design actually allows you to use less heat than you are used to, while still getting better results than you would with a flat iron or other hot tool. It's a totally new way of thinking about heat and your hair - you don't need the extreme heat to get the results you want. If you decide that you would like more heat, the InStyler has three different temperature settings.

Can I use the InStyler to curl hair?

- A. Absolutely! Simply by wrapping your hair around the rotating heated polishing barrel, and closing the InStyler, you can create great curls!

The heated polishing barrel rotates. Can my hair get tangled?

- A. No. The surface of the rotating heated polishing barrel is totally smooth, so your hair will not get tangled.

What is the diameter of the heated barrel?

- A. Your InStyler's heated barrel diameter is 32 mm.

What are the bristles made of?

- A. The bristles are made of heat resistant nylon.

What is the power of the InStyler?

- A. The InStyler is 220-240v, 50/60Hz and 58 Watts.

How do I turn the InStyler on?

- A. Check to make sure your InStyler is plugged in. Press the Power button. The LED bars should light and begin flashing. Once the LED stops flashing the InStyler is ready to go. You must close the handle to begin the rotation.

How do I get my InStyler to rotate?

- A. You must close the handle to start the rotation. The rotation will start automatically.

What if my InStyler does not heat?

- A. Check to make sure your InStyler is plugged in. Press the Power button. The LED bars should light and start flashing. When the LED stops flashing the InStyler will be at the set temperature and ready to use.

When I use my InStyler, why does the temperature LED start to flash?

- A. It is normal for the heat to fluctuate during use. As long as the InStyler has been allowed to reach full heat (steady LED) after powering on, you can continue to use your InStyler while it is flashing.

How do I clean my InStyler?

- A. When cleaning your InStyler, disconnect it from the power source and make sure it has completely cooled. Wipe the outside surface only with a soft damp cloth. Be sure to wring out all excess water before applying it to the InStyler. Clean more severe dirt by using a soft, damp cloth with a mild soap. Bristles can be lightly scrubbed if necessary with a damp cloth to remove any built up product and any residual hair left in the bristles should be removed. The barrel can be wiped down with a soft, damp cloth. Use a mild soap if necessary. Make sure the InStyler is completely dry before plugging into any power source.

Your Guarantee

This product is under guarantee for 12 months. We do not offer returns but do respect your Statutory rights.

LIMITED ONE YEAR WARRANTY

The InStyler and its parts are warranted against manufacturer defects for one year from the date of purchase. This limited warranty only covers the items specifically listed above for the period specified. IF THE WARRANTY CARD IS NOT COMPLETED AND RETURNED TO COMPANY AT THE TIME OF THE ORIGINAL SALE, CONSUMER MUST PROVIDE PROOF OF PURCHASE WITH ANY WARRANTY CLAIM.

EXCLUSIONS

Excluded from this limited warranty are damages to the InStyler caused by unreasonable or unintended use, abuse or neglect. Also excluded is damage from ordinary wear and tear.

VOIDING OF LIMITED WARRANTY:

THE FOLLOWING OCCURRENCES OR CONDITIONS WILL VOID THIS LIMITED WARRANTY: (1) USE FOR COMMERCIAL PURPOSES; (2) FAILURE TO USE THE INSTYLER ACCORDING TO COMPANY'S SPECIFICATIONS AND INSTRUCTIONS INCLUDING, WITHOUT LIMITATION, SAFETY INSTRUCTIONS AND WARNINGS; (3) FAILURE TO PROPERLY CLEAN AND MAINTAIN THE INSTYLER AS STATED IN THE MANUAL; AND (4) TRANSFER OR ASSIGNMENT OF THIS WARRANTY.

SOLE REMEDY

The sole remedy under this limited warranty is repair or replacement, the Company's option, of the InStyler or part(s) deemed to be defective. "Repair" or "Replacement" shall mean providing the labour and materials necessary, at no cost to the consumer, to repair or replace the defective parts or replace, at Company's option, the InStyler.

HOW TO MAKE A WARRANTY CLAIM:

To present a claim under this limited warranty, call the telephone number below to receive a return authorisation code.
Customer Services: 03301239101

DISCLAIMER:

The Warranty in this document is the only Warranty on the InStyler. Company makes no other Warranty of any kind, express or implied. All implied Warranties of merchantability and fitness for a particular purpose which exceed the obligation or time limits stated in this Warranty are hereby disclaimed by Novellia UK Ltd and excluded from this Warranty.

Distributed by:
Novellia UK Ltd
26 Park Road
Melton Mowbray
Leicestershire
LE13 1TT

www.instyler.co.uk

Returns Policy

Novellia UK Ltd values its relationship with its customers, and therefore, offers a return policy for any faulty products purchased directly from Novellia UK Ltd.

To return any faulty products, you must contact Novellia UK Ltd and receive a Credit Return Authorisation Number within the warranty period. You must receive a Credit Return Authorisation Number in order to return the product. Call 03301239101 to receive your Credit Return Authorisation Number.

YOU MUST:

- Provide full contact details.
- Provide a reason for returning the product.
- Post the product and all accompanying components to Novellia UK Ltd, c/o PO BOX 724, ALTRINCHAM, WA15 5BJ.
- Return the product in the original packaging with all other items included in the purchase and the original purchase receipt.
- Mark the outside of your return shipping box with your Credit Return Authorisation Number and your first and last name in clearly printed letters.
- This returns policy doesn't affect your statutory rights.

Details that will be required for any faulty InStylers:

- Name
- Address
- Telephone Number
- Email
- Place of Purchase
- Price Paid
- Serial Number
- Model Number
- Reason for Return

Other Important Information

Packaging and Environmental Warnings/Recycling Information

After removing the product from the packaging ensure that all contents are intact and free from damage. In the unlikely event of missing or damaged parts; please contact your retailer or Novellia UK Ltd, directly.

NEVER LEAVE CHILDREN UNATTENDED WITH PACKAGING TO AVOID A POTENTIAL SOURCE OF DANGER.

Please dispose of all packaging responsibly in accordance with your Local Authority regulations. Recycle the packaging material where possible.

Your appliance contains valuable materials which can be recovered or recycled. If you decide to replace your product please recycle where facilities exist. Check with your Local Authority or retailer for your local civic waste collection facility.

Unwanted electrical products should not be disposed of with household waste.

Power Cord and Plug Warning (UK AND Ireland) The sealed power cord supplied with this product is fitted with an earthed 13A plug (BS1363) and is intended for domestic use only in the country of purchase.

The sealed power supply cord and plug is not user-serviceable. Replace fuse only with an approved 13A fuse (BS1362).

ALWAYS ENSURE FUSE COVER IS SECURELY IN PLACE BEFORE OPERATION.

DO NOT attempt to operate the product with any other power cord other than the one provided or if the power cord or plug is damaged in any way. To order a replacement contact Novellia UK Ltd, using the contact details supplied in this manual.

DO NOT use this product with an extension lead. If you accept liability for doing so, only use a good quality extension lead with an earthed plug that is suited to the power of the appliance.

FAILURE TO COMPLY TO THE ABOVE WARNINGS COULD LEAD TO SERIOUS DAMAGE TO THE PRODUCT AND/OR PERSONAL INJURY AND MAY INVALIDATE YOUR GUARANTEE.



IN STYLER[®]

Rotating Iron

Features and Benefits for InStyler Models

InStyler 32mm Rotating Iron



InStyler 19mm Rotating Iron



Straightens with body	Straightens with body
Creates perfect soft curls	Great for straightening close to the root
Works with all hair types	Works with all hair types
Works on all hair lengths, works especially well with medium to long hair styles	Works with all hair lengths, works especially well with short hair styles
Creates softer flick out and curl under styles	Creates perfect spiral curls and tighter flicks
Great for volume boost at the crown	Great for volume boost and detail work
Self-adjusting floating heated plate for smoother, shinier hair	Self-adjusting floating heated plate for smoother, shinier hair

Join our community for updated tips, tricks, videos, and special product offers.



www.instyler.co.uk

Distributed by Novellia UK Ltd.
 PO Box 724, Altrincham, WA15 5BJ
 Customer Service: 0330 1239101

©2014 Tré Milano, LLC. All Rights Reserved.
 InStyler[®] and InStyler[®] logo are registered trademarks of Tré Milano, LLC.

Illustrations by Renee Reeser Zelnick